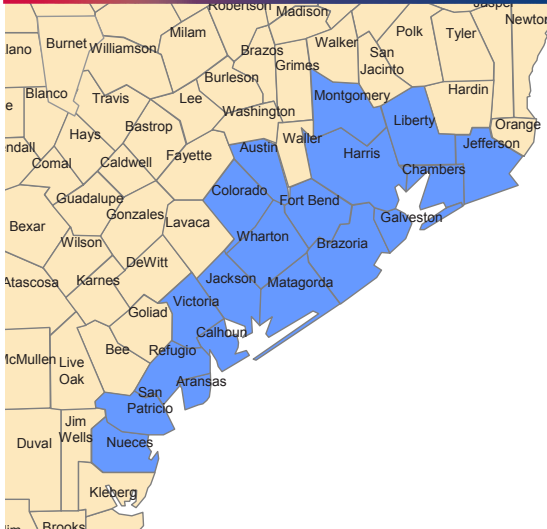
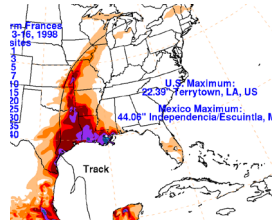
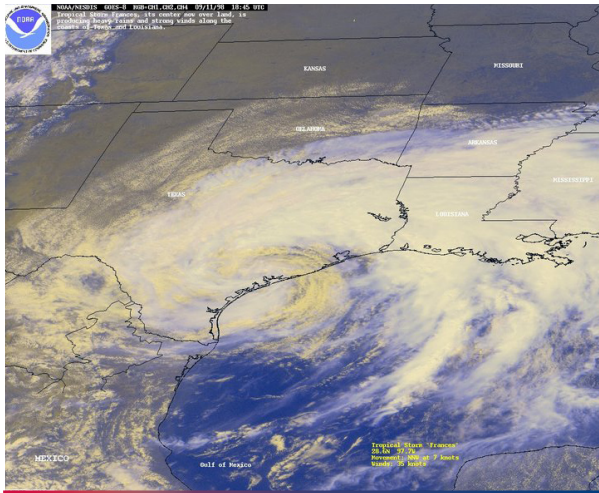


**TEXAS TASK FORCE 1 PREPARES A TYPE I FOR DEPLOYMENT**



On September 9th, Texas Task Force 1 (TX-TF1) was activated by the Governor's Division of Emergency Management (GDEM) to prepare for a Texas landfall of Tropical Storm Frances. The Task Force was mobilized, and staged at the Brayton Fire Training Field Station in College Station. On the afternoon of September 11th, Frances made landfall north of Corpus Christi as a moderately strong tropical storm. It weakened to a tropical depression as it travelled north, dissipating north of Dallas.



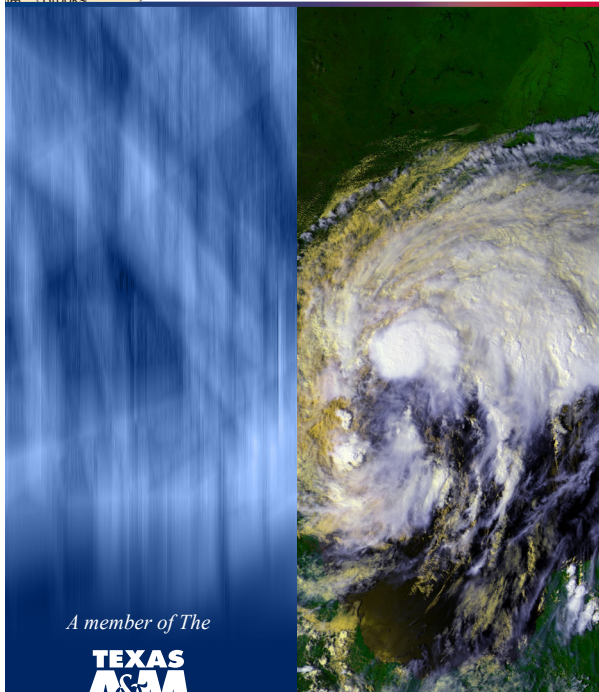
Upon making landfall, Frances was a relatively large storm with tropical storm force winds extending 300 nautical miles from the center of circulation. Frances brought an 8 foot storm surge, and as the storm moved slowly inland, it produced torrential rains, with a maximum of 17 inches in Matagorda County and many other areas reporting 10 inches. Heavy rainfall caused large amounts of flood damage in southeast Texas including Harris County. 1,400 homes and business in and around Houston were damaged or destroyed by the floods but there were no reports of structural collapse. There were no calls for assistance from local officials and the task force was demobilized the day after the storm made landfall.

**Deployment Statistics**

• Incident involved 70 personnel deployed for 4 days

**Type I US&R Task Force**

- 4 rescue squads
- 2 technical search teams
- 3 canine search teams
- Communications personnel and equipment
- Medical personnel and equipment



A member of The

