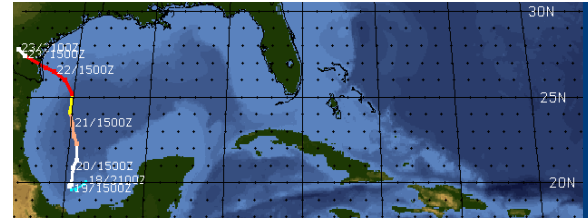
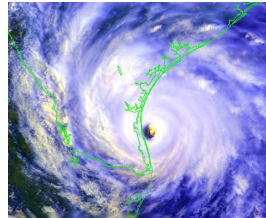
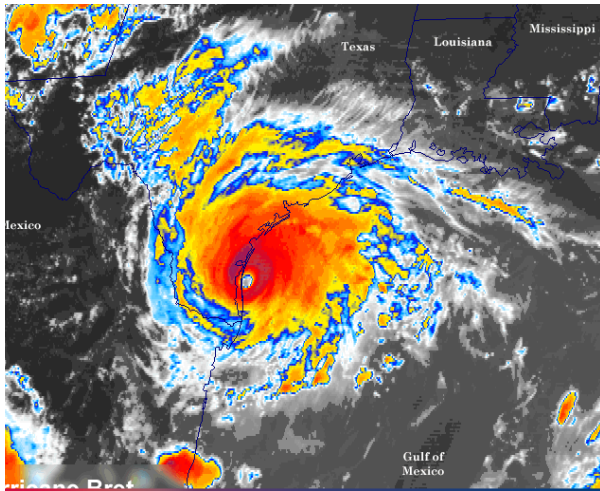
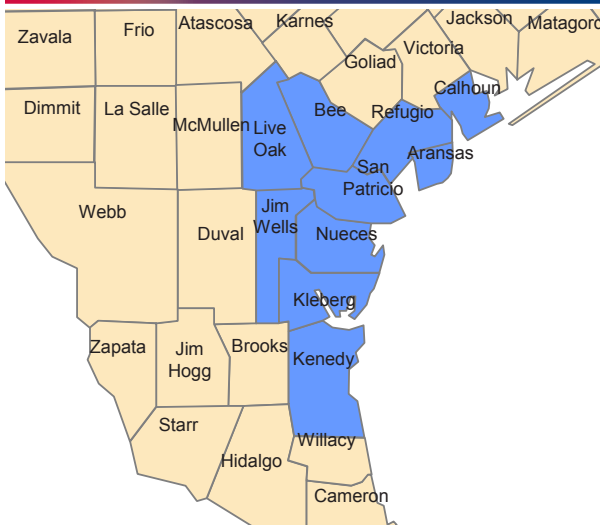


**CATEGORY 4 HURRICANE COMES ASHORE IN SOUTH TEXAS**



On August 21st, Texas Task Force One (TX-TF1) was activated by the Governor's Division of Emergency Management (GDEM) to prepare for a Texas landfall of Hurricane Bret. The Task Force was forward deployed to the Alamodome in San Antonio and continued planning operations. On the afternoon of Aug. 22nd Hurricane Bret reached Category 4 status as it slammed ashore in Kenedy County, half-way between Brownsville and Corpus Christi.



Upon making landfall, Bret brought a 5-7 foot storm surge, along with substantial beach erosion caused by prolonged intense waves. As Bret moved slowly inland, it produced torrential rains, amounting to a maximum of 13 inches in central Kenedy County, with other locations reporting over 10 inches. The Hurricane spawned one tornado in Aransas County which destroyed an RV and a barn, and uprooted trees, while two other tornadoes were reported in southeast Texas. Due to the low population density of Kenedy County, there were no calls for assistance from local officials and the task force was not deployed into the affected area.

Evacuations in advance of Hurricane Bret were some of the largest in the State's history:

County	Population Evacuated	(Percent of the Population)
San Patricio	35,000 - 40,000	(50-60%)
Kleberg	17,500	
Aransas	15,000	(70%)
Calhoun	8,000 - 9,000	(30-40%)
Nueces	70,000 - 100,000	

**Deployment Statistics**

• Incident involved 70 personnel deployed for 2 days

Type I US&R Task Force

- 4 rescue squads
- 2 technical search teams
- 3 canine search teams
- Communications personnel and equipment
- Medical personnel and equipment

Water Rescue Boats from the Lower Colorado River Authority were staged with TX-TF1

