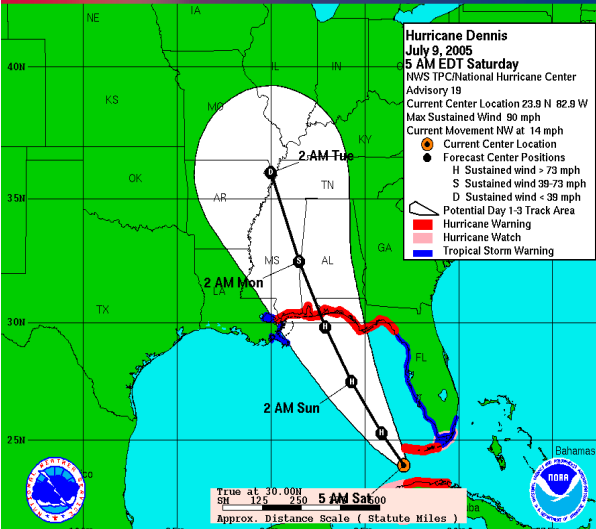
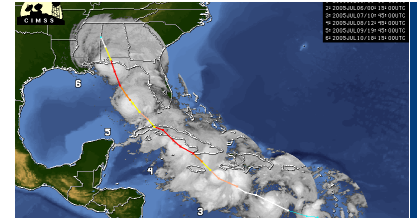
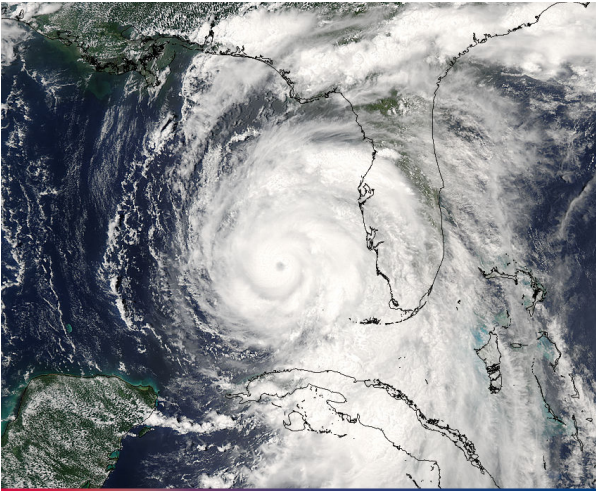


TX-TF1 STAGED IN MISSISSIPPI



On July 9th, Texas Task Force One (TX-TF1) was deployed by the Federal Emergency Management Agency (FEMA) in advance of Hurricane Dennis' landfall along the Eastern Gulf Coast. The twenty eight member Type III team and six support personnel departed College Station at 9:45 a.m. Saturday for Meridian, Miss., where they staged in advance of Dennis' landfall. The inland location was selected to allow TX-TF1 to quickly respond to some of the hardest-hit areas along the Gulf Coast. The other FEMA urban search and rescue teams deployed for Hurricane Dennis included Tennessee Task Force 1 and Missouri Task Force 1.

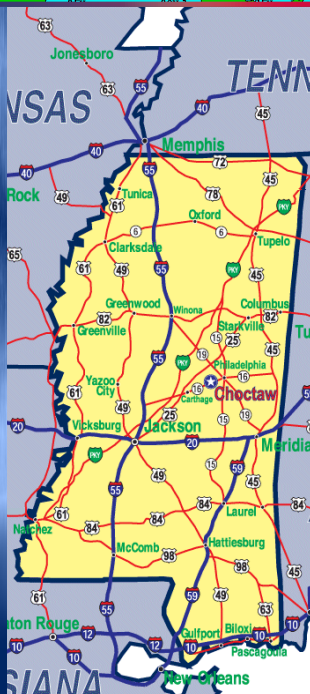
The initial damage reports were not as severe as originally predicted, and local authorities did not request assistance from the three FEMA search and rescue teams stationed along the Gulf Coast. As a result, at 1pm on July 11th, TX-TF1 received its demobilization orders from FEMA.

Deployment Statistics

• Incident involved 28 personnel deployed for 3 days

Type III US&R Task Force

- 4 canine search specialists
- 2 technical search specialists
- 4 rescue specialists
- 2 structural engineers
- 2 communications personnel and equipment
- 2 hazardous materials personnel and equipment
- 3 medical personnel and equipment
- 2 logistics personnel and equipment



A member of The

