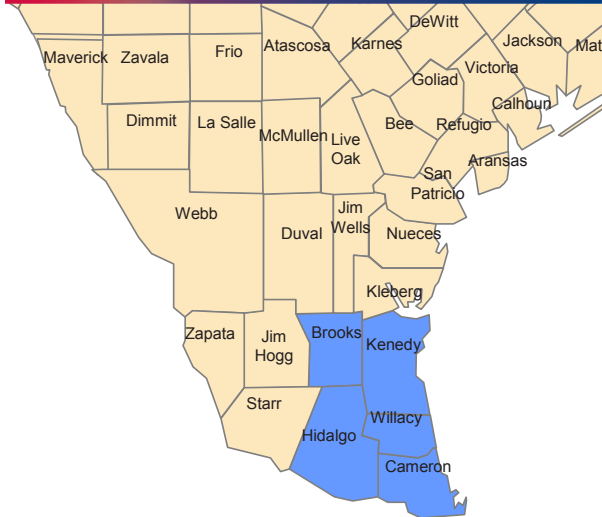
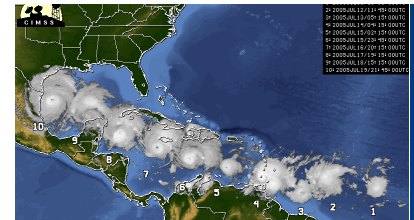
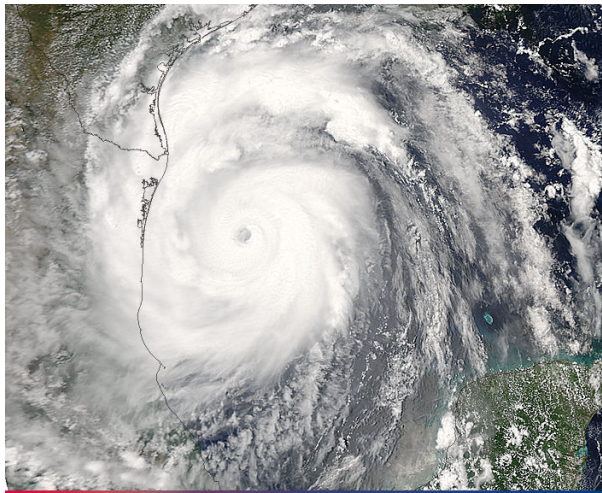


TX-TF1 DEPLOYS IN ADVANCE OF HURRICANE EMILY



On July 18th, Texas Task Force One (TX-TF1) was activated by the Governor's Division of Emergency Management (GDEM) in advance of Hurricane Emily's landfall along the South Texas Gulf Coast. The twenty eight member Type 3 water task force departed College Station at 7 a.m. on July 19th for the South Texas area, where they staged in advance of Emily's landfall. The water task force was equipped to respond to flooding and swiftwater rescue events, provide command and control support, and augment the communications capabilities of local emergency responders. Emily was expected to produce significant rainfall in South Texas and heavy flooding is predicted.



TX-TF1 also dispatched personnel to the State Operations Center in Austin and the McAllen-area Disaster District Committee. The team had additional personnel and equipment on standby should they be needed in response to Emily.

Late Wednesday, July 20th, TX-TF1 received its demobilization orders related to Hurricane Emily from the GDEM. TX-TF1 returned to its headquarters in College Station on July 21st. The damage reports in South Texas were not as severe as originally predicted and local authorities did not request assistance from TX-TF1.

Deployment Statistics

• Incident involved 27 personnel deployed for 3 days

Type III US&R Water Task Force

- 3 water rescue squads
- Communications personnel and equipment

Swift water rescue logistics personnel with trailer and communications package were deployed with the Water Task Force

1 ESF-9 Coordinator assigned at the State Operations Center

1 ESF-9 Liaison assigned at the McAllen DDC



A member of The

