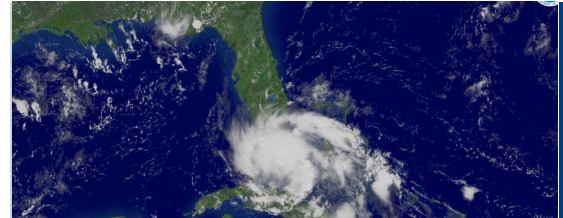
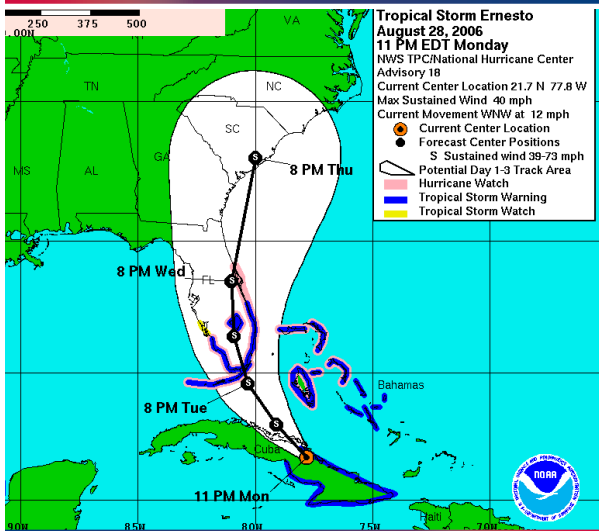
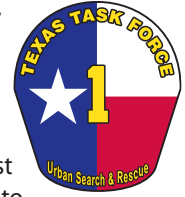


TASK FORCE SUPPORTS FEMA IST DEPLOYMENT FOR HURRICANE ERNESTO



On August 28th, 2006, in preparations for hurricane Ernesto, the Federal Emergency Management Agency (FEMA) activated and forward deployed Texas Task Force 1 (TX-TF1) and ten additional FEMA US&R task forces. In order to support such a large National US&R deployment, FEMA activated an Incident Support Team (IST) and requested that TX-TF1 personnel assist with staffing. Two TX-TF1 personnel were requested by FEMA to forward deploy with the IST which was staged at the Naval Air Station Jacksonville in Florida. The IST established a base camp at NAS Jacksonville and began planning operations for the ten FEMA US&R task forces enroute to the area.



TX-TF1 provides personnel to staff the FEMA US&R IST for deployments throughout the United States upon activation by FEMA. Supporting the mobilization and deployment of the FEMA IST provides task force personnel an opportunity to train and practice command and planning functions at large scale incidents and improves the State's capability for disaster response and mitigation. The multi-disciplinary FEMA US&R task forces afford search, rescue, medical, and technical capabilities, and a wide variety of services for catastrophic events.

In addition to supporting personnel to staff the IST, TX-TF1 also maintains a portion of the FEMA US&R IST equipment cache trailers for deployment throughout the United States upon activation by FEMA. The mobilization and use of FEMA IST cache provides a significant capability for disaster response and mitigation. The multi-disciplinary FEMA US&R task forces afford search, rescue, medical, and technical capabilities, and a wide variety of services for catastrophic events. The IST cache maintained by TX-TF1 was also deployed to NAS Jacksonville, FL in preparation for hurricane Ernesto.

The initial damage reports were not as severe as originally predicted, and local authorities did not request federal assistance from any of the twelve FEMA search and rescue teams stationed



Deployment Statistics

- Incident involved 2 personnel deployed for 7 days

FEMA Incident Support Team

- 2 Task force members deployed as the Point of Arrival/
Mobilization Specialist and IST Deputy Leader

ESF-9 Coordination Center in College Station was activated for this deployment

A member of The

