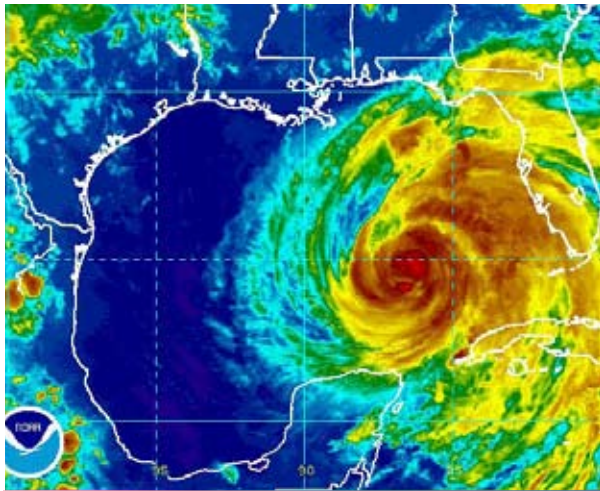


IST CACHE SUPPORTS NINE FEMA US&R TEAMS DEPLOYED FOR HURRICANE IKE



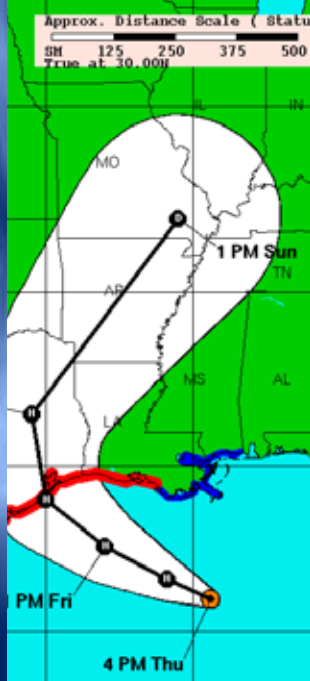
On September 7th, as the threat from Hurricane Gustav diminished for the state of Texas, Hurricane Ike began move into the Gulf of Mexico. At the request of the state of Texas, on Sept. 7th, the Federal Emergency Management Agency (FEMA) extended the deployment of the FEMA Incident Support Team (IST) cache of equipment already stationed at Reliant Center in Houston. The IST cache and personnel had been staged at Reliant Center due to the approach of Hurricane Gustav. A member of TX-TF1 was also mobilized and deployed to Reliant Center in Houston as an IST Communications Specialist.



As Hurricane Ike headed for Texas, TEEX (ESF-9) and TX-TF1 directed and coordinated with the FEMA IST and nine US&R teams which were pre-staged in Houston to support the Texas search and rescue efforts. The staged task forces were comprised of three Type I and six Type III teams.

TX-TF1 maintains one of three FEMA US&R Incident Support Team cache trailers for deployment throughout the United States upon activation by FEMA. The mobilization and use of FEMA IST cache provides a significant capability for disaster response and mitigation. The multi-disciplinary FEMA US&R task forces afford search, rescue, medical, and technical capabilities, and a wide variety of services for catastrophic events. TX-TF1 also provides personnel to staff the FEMA US&R IST for deployment throughout the United States upon activation by FEMA. Supporting the mobilization and deployment of the FEMA IST provides task force personnel an opportunity to train and practice command and planning functions at large scale incidents and improves the State's capability for disaster response and mitigation.

The IST equipment cache is organized into functional kits and is available for dispatch with the IST. FEMA maintains these kits to support the IST with communications equipment (including telephones and radios), computers, printers, and administrative office supplies. The IST cache supported FEMA coordination efforts for US&R task forces assigned to respond in Texas. The IST equipment cache provided logistical support for all nine FEMA US&R Task Forces for a period of 12 days. On the afternoon of September 18, after all search and rescue operations were completed, TX-TF1 released all federal search and rescue assets assigned to Texas.



Deployment Statistics

• Incident involved 3 personnel deployed for 12 days

- FEMA Incident Support Team Equipment Cache
 - 1 eighteen-wheel cargo truck
 - 2 IST cache support personnel and truck drivers
 - 1 IST communications specialist

ESF-9 Coordination Center in College Station was activated for this deployment

