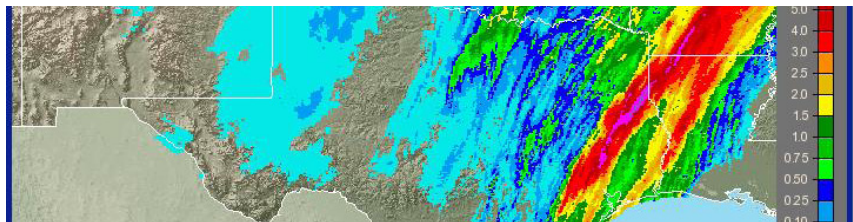
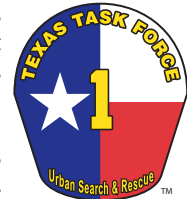


SEVERE WEATHER AND HEAVY RAIN PREDICTED ACROSS SOUTHEAST TEXAS



On October 28, 2009, Texas Task Force 1 (TX-TF1) was activated by the Texas Division of Emergency Management (TDEM) to prepare for severe weather and heavy rains across central Texas. The Task Force mobilized and pre-staged Helicopter Search and Rescue (SAR) Technicians in Austin and San Antonio. TX-TF1 also mobilized Helicopter SAR Managers to Austin and San Antonio to provide command and control. The SAR Technicians and Managers were on location and ready for deployment from Austin and San Antonio the morning of October 29.



The National Weather Service (NWS) predicted severe weather and heavy rain activity east of the Interstate 45 corridor from Houston to Dallas, moving eastward through the afternoon of October 29. In response to this information, two helicopters with TX-TF1 SAR technicians, along with three water rescue teams, were forward-deployed to the city of Lufkin on the afternoon of October 29.

On the evening of October 30, after the threat of flooding across Texas had subsided, TDEM released all TX-TF1 personnel from standby status.

DEPLOYMENT STATISTICS

• Incident involved 47 personnel deployed for 3 days

- 2 UH-60 Blackhawk helicopters staged in Austin
- 4 TX-TF1 Helicopter SAR Technicians staged in Austin
- 1 TX-TF1 Helicopter SAR Manager staged in Austin

- 2 UH-60 Blackhawk helicopters staged in San Antonio
- 4 TX-TF1 Helicopter SAR Technicians staged in San Antonio
- 1 TX-TF1 Helicopter SAR Manager staged in San Antonio

- 6 Water Rescue Teams (32 personnel)
- 2 Teams staged in the Austin area
- 3 Teams staged in the Dallas/Fort Worth area
- 1 Team staged in the San Antonio area

- 1 ESF-9 Coordinator assigned to the State Operations Center
- 2 ESF-9 Liaisons forward-deployed to the Beaumont DDC
- 1 ESF-9 Liaison forward-deployed to the Lufkin DDC
- 1 ESF-9 Liaison forward-deployed to the Houston DDC

- ESF-9 Coordination Center in College Station was activated for this deployment

