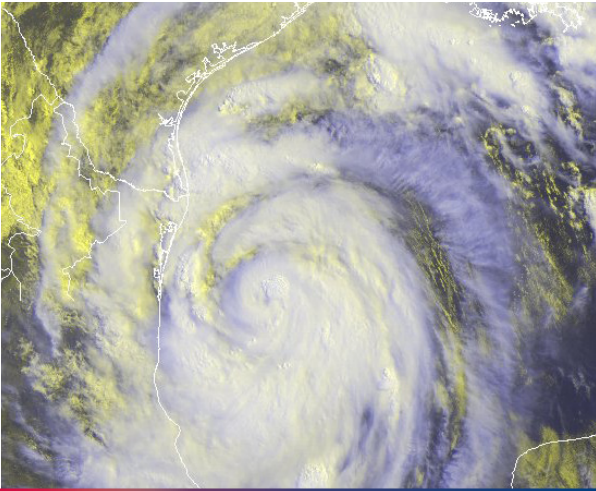


MULTIPLE TASK FORCES AND WATER RESCUE TEAMS DEPLOYED TO SOUTH TEXAS



On June 28, the Texas Division of Emergency Management (TDEM) directed TX-TF1 to activate search and rescue assets for deployment to South Texas. These resources were mobilized and staged in College Station. At the time, Tropical Storm Alex was located in the Gulf of Mexico and the National Weather Service (NWS) predicted the storm may intensify into a hurricane, with possible landfall between Brownsville and Corpus Christi.



On June 29, all search and rescue resources forward deployed to South Texas and began familiarizing themselves with the local area and establishing liaison with local emergency responders. Alex made landfall as a Category 2 hurricane on July 30 in Soto La Marina, Mexico with 105 mph winds.

After landfall, Alex continued moving westward and dropped significant rainfall over Southern Texas and Northern Mexico over a 36 hour period, causing some isolated flooding. The storm impacted 6 counties in south Texas. The Task Forces worked over the next 3 days supporting local jurisdictions in the impacted area.

On the morning of July 3, after the threat of major flooding had subsided, TDEM released all deployed task forces to return from operations in south Texas.



Deployment Statistics

• Incident involved 215 personnel deployed for 6 days

- Type I US&R Task Force (consisting of 78 personnel)
 - 4 Rescue squads
 - 4 Canine and 2 technical search teams
 - Command, Medical, Logistics, HazMat and Communications personnel
- Quick Reaction Force (consisting of 30 personnel)
 - 2 Rescue squads
 - 2 Canine and 2 technical search teams
 - Command, Medical, Logistics, HazMat and Communications personnel
- Type III Task Force (TX-TF2 consisting of 42 personnel)
 - 2 Rescue squads
 - 2 Canine and 2 technical search teams
 - 2 Water rescue squads
 - Command, Medical, Logistics, HazMat and Communications personnel
- Water Rescue Squads (consisting of 45 personnel)
 - 9 Water rescue squads (5 personnel on each squad)
- State of Texas ESF-9 Unified Command Team (consisting of 7 personnel)
 - Command staff and support personnel comprising a Water, Structural and Air Branch
- 8 UH-60 Blackhawk helicopters staged in Austin and San Antonio
- 10 TX-TF1 helicopter rescue technicians staged with the helicopters
- 2 ESF-9 Coordinators assigned to the State Operations Center
- 1 ESF-9 Liaison assigned to the Texas Military Forces Joint Operations Center
- ESF-9 Coordination Center in College Station was activated for this deployment

